

Best **TOOLS** for **CUTTERS**



■ MADE
■ IN
■ GERMANY



Thread: M14

For your Sewer Rehab Robots:

Schwalm, ProKasro, I.S.T PC, ID-TEC, IBAK MicroGator,
IBG-Hydro-Tech, Hächler HF130, Streicher EF/HF130, ...

EN

THREAD M14

Milling tools suitable for **CIPP**, **PVC** and **ROOTS**



Diamond cone milling tool

Field of application: Opening of laterals and inlet lines

Ø mm	Height mm	Segments	Code-No.
30/10	29	10	21 49 40 063

Kardiam-BLACK-POWERLINE® Not for steel-reinforced concrete!



Diamond cone milling tool

Field of application: Opening of laterals and inlet lines

Ø mm	Height mm	Segments	Code-No.
40/20	47	16	21 49 40 014

Kardiam-BLACK-POWERLINE® Not for steel-reinforced concrete!



Diamond cone milling tool - with dia-tip -

Field of application: Opening of laterals and inlet lines

Ø mm	Height mm	Segments	Code-No.
30/15	44	4+2	21 49 40 101

Kardiam-BLACK-POWERLINE® Not for steel-reinforced concrete!



Diamond cone milling tool - asymmetrical segments + dia-tip -

Field of application: Opening of laterals and inlet lines

Ø mm	Height mm	Segments	Code-No.
28/18	45	asymmetrical +2	21 49 40 504

Kardiam-BLACK-POWERLINE® Not for steel-reinforced concrete!



Diamond cone milling tool

- with carbide-tip, with chip run-off grooves, smooth running cut -

Field of application: Opening of laterals and inlet lines

Ø mm	Height mm	Segments	Code-No.
28/14	47	14+1	21 49 40 227

Kardiam-BLACK-POWERLINE® Not for steel-reinforced concrete!

Milling tools suitable for **CIPP, PVC** and **ROOTS**

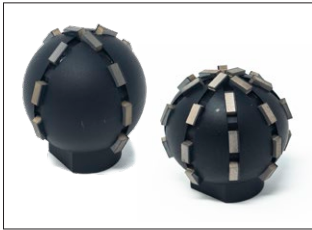


Diamond double-cone milling tool - transparent -

Field of application: Opening of laterals and inlet lines

Ø mm	Height mm	Segments	Code-No.
45	60	34 - 6 wings	21 49 40 343

Kardiam-BLACK-POWERLINE® Not for steel-reinforced concrete!



Diamond globe milling tool

Field of application: Opening of laterals and inlet lines

Ø mm	Height mm	Segments	Code-No.
32	35	14	21 49 40 057
42	45	14	21 49 40 039
42	45	28 double	21 49 40 032

Kardiam-BLACK-POWERLINE® Not for steel-reinforced concrete!



Diamond globe milling tool - transparent -

Field of application: Opening of laterals and inlet lines

Ø mm	Height mm	Segments	Code-No.
50	57	30 - 6 wings	21 49 40 344

Kardiam-BLACK-POWERLINE® Not for steel-reinforced concrete!



Diamond globe milling tool

- with chip run-off grooves, smooth running cut -

Field of application: Opening of laterals and inlet lines

Ø mm	Height mm	Segments	Code-No.
50	50	24	21 49 40 231
60	65	30	21 49 40 230

Kardiam-BLACK-POWERLINE® Not for steel-reinforced concrete!



Diamond globe milling tool - asymmetrical segments -

Field of application: Opening of laterals and inlet lines

Ø mm	Height mm	Segments	Code-No.
50	54	asymmetrical	21 49 40 501
70	79	asymmetrical	21 49 40 502

Kardiam-BLACK-POWERLINE® Not for steel-reinforced concrete!



Diamond cone-cylinder milling tool - with carbide-tip, asymmetrical segments -

Field of application: Opening of laterals and inlet lines

Ø mm	Height mm	Segments	Code-No.
50	55	asymmetrical +1	21 49 40 583
70	65	asymmetrical +1	21 49 40 503

Kardiam-BLACK-POWERLINE® Not for steel-reinforced concrete!

THREAD M14

Milling tools suitable for **CIPP**, **PVC** and **ROOTS**



Diamond cone-cylinder milling tool

Field of application: Opening of laterals and inlet lines, removes deposits

Ø mm	Height mm	Segments	Code-No.
42	33	22	21 49 40 077

Kardiam-BLACK-POWERLINE® Not for steel-reinforced concrete!



Diamond cylinder milling tool

Field of application: Opening of laterals and inlet lines, removes deposits

Ø mm	Height mm	Segments	Code-No.
32	32	12	21 49 40 097
45	30	20	21 49 40 025

Kardiam-BLACK-POWERLINE® Not for steel-reinforced concrete!



Diamond inflow pipe milling tool

Field of application: Opening of laterals and inlet lines, removes deposits

Ø mm	Height mm	Segments	Code-No.
58	31	28	21 49 40 242

Kardiam-BLACK-POWERLINE® Not for steel-reinforced concrete!



Diamond plate milling tool

Field of application: Opening of laterals and inlet lines, removes deposits

Ø mm	Height mm	Segments	Code-No.
50	20	20	21 49 40 096
63	27	24	21 49 40 044

Kardiam-BLACK-POWERLINE® Not for steel-reinforced concrete!



Diamond plate milling tool - center cutting -

Field of application: Opening of laterals and inlet lines, removes deposits

Ø mm	Height mm	Segments	Code-No.
63	27	20+4	21 49 40 144

Kardiam-BLACK-POWERLINE® Not for steel-reinforced concrete!



Diamond finger milling tool

Field of application: Opening of laterals and inlet lines

Ø mm	Height mm	Segments	Code-No.
12	60	3	21 49 40 099

Kardiam-BLACK-POWERLINE® Not for steel-reinforced concrete!

THREAD M14

Milling tools suitable for **CONCRETE, VITRIFIED CLAY** and **DEPOSITS**



Diamond globe milling tool

Field of application: Preparatory milling of laterals,
Removal of intruding laterals and deposits

Ø mm	Height mm	Segments	Code-No.
36	37	8	21 49 70 058



Diamond globe milling tool

Field of application: Preparatory milling of laterals,
Removal of intruding laterals and deposits

Ø mm	Height mm	Segments	Code-No.
48	47	21	21 49 70 054



Diamond globe milling tool

Field of application: Preparatory milling of laterals,
Removal of intruding laterals and deposits

Ø mm	Height mm	Segments	Code-No.
60	64	16	21 49 70 056



Diamond halfglobe milling tool

Field of application: Preparatory milling of laterals,
Removal of intruding laterals and deposits

Ø mm	Height mm	Segments	Code-No.
65	30	10	21 49 60 074



Diamond plate milling tool

Field of application: Preparatory milling of laterals,
Removal of intruding laterals and deposits

Ø mm	Radius / Tube	Height mm	Segments	Code-No.
50	60 / 200-300	23	10	21 49 60 034
70	60 / 200-300	34	10	21 49 60 012
70	80 / 300-450	34	10	21 49 60 013
70	100 / 450-600	34	10	21 49 60 014
70	60 / 200-300	34	15	21 49 60 016
70	80 / 300-450	34	15	21 49 60 017
70	100 / 450-600	34	15	21 49 60 018

THREAD M14

Milling tooling suitable for **CONCRETE, VITRIFIED CLAY** and **DEPOSITS**



Diamond cone milling tool

Field of application: Preparatory milling of laterals, removal of intruding laterals and deposits

Ø mm	Height mm	Segments	Code-No.
38/28	52	6	21 49 60 059
48/40	24	9	21 49 00 067
55/45	40	9	21 49 00 069



Diamond plate milling tool

Field of application: Preparatory milling of laterals, removal of intruding laterals and deposits

Ø mm	Pipe DN mm	Height mm	Segments	Code-No.
70	200-300	30	18	21 49 60 155
70	300-450	30	18	21 49 60 156
70	450-600	30	18	21 49 60 157
80	200-300	30	21	21 49 60 055
80	300-450	30	21	21 49 60 056
80	450-600	30	21	21 49 60 057



Diamond inflow pipe milling tool

Field of application: Preparatory milling of laterals, removal of intruding laterals and deposits

Ø mm	Pipe DN mm	Height mm	Segments	Code-No.
68	300	33	16	21 49 60 094



Diamond inflow pipe milling tool

Field of application: Preparatory milling of laterals, removal of intruding laterals and deposits

Ø mm	Pipe DN mm	Height mm	Segments	Code-No.
53	100	30	8 DN100	21 49 60 042
75	200	30	8 DN200	21 49 60 041
85	250-300	33	12 DN250	21 49 60 040



Diamond plate milling tool

Field of application: Preparatory milling of laterals, removal of intruding laterals and deposits

Ø mm	Pipe DN mm	Height mm	Segments	Code-No.
95	250	34	12	21 49 70 015

ACCESSORIES - THREAD M14



Extensions

Ø mm	Length mm	Code-No.
22	33	21 50 01 021
22	40	21 50 01 037
22	50	21 50 01 026



Corundum grindstone

Field of application: Grinding of metal and cast iron pipes, removal of intruding obstacles

Ø mm	Borehole / Thread	Height mm	Code-No.
40	M14	55	21 50 00 110
40	12	30	21 50 00 113
80	M14	30	21 50 00 103
80	22,2	27	21 50 00 102
90/110	M14	57	21 50 00 104
90/110	22,2	53	21 50 00 101



Multifunctional key for changing the screw connection

(Corundum grindstone Ø 80 + Ø 90/110):

Total length mm	SW	Pins	Code-No.
160	24	2	21 50 00 111



Diamond cutting disc

Field of application: Cutting of inliners, GRP, PE,...

Ø mm	Borehole / Thread	Height mm	Code-No.
50	M14	42	21 49 60 033
50	6,0	2	21 28 27 112
75	6,0	2	21 28 27 113
115	M14	47	21 49 60 133
115	22,2	2	21 28 27 110
125	22,2	2	21 28 27 111



Brushes

Field of application: Post-processing of inliner openings, removal of residual film, Cleaning, roughening work, ...

Brushes:	Ø mm	Height mm	Code-No.
Cup Brush	65	50	21 50 00 205
Cup Brush	80	71	21 50 00 208
Cup Brush	100	65	21 50 00 236
Conical Disc Brush	100	37	21 50 00 203
Disc Brush	100	27	21 50 00 206



Best **TOOLS** for **CUTTERS**

We are happy to advise you! Just give us a call!
We have tools for all sewer rehabilitation robots!

+49 (0)7520-9515-0

Send us a fax!

+49 (0)7520-9515-29

or send us an e-mail:

info@kardiam.de



www.kardiam.de

KARDIAM Diamantwerkzeuge GmbH
Claude-Dornier-Straße 17
D-88239 Wangen
GERMANY

Phone: +49 (0)7520-9515-0
Fax: +49 (0)7520-9515-29
info@kardiam.de
www.kardiam.de