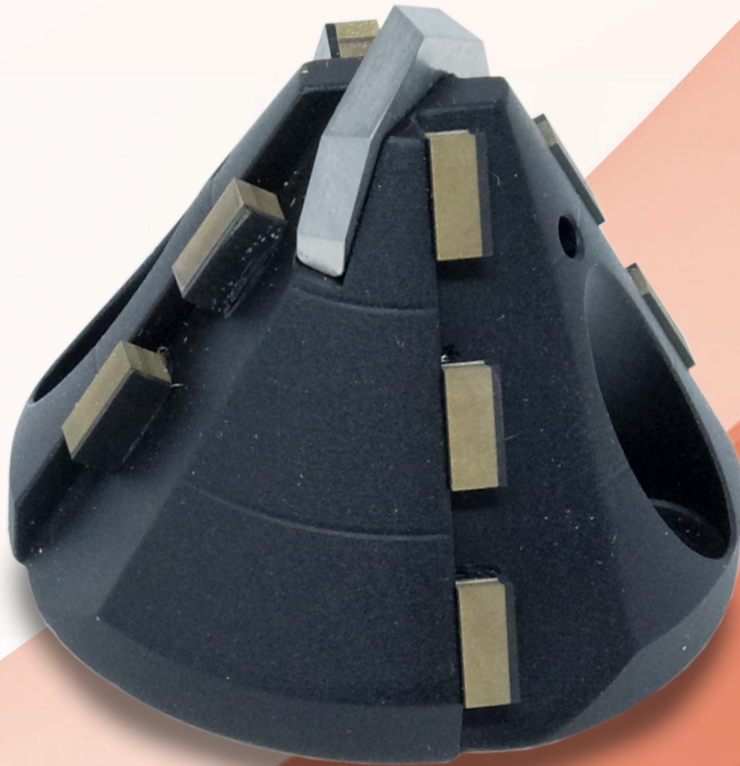


Best **TOOLS** for **CUTTERS**



■ MADE
■ IN
■ GERMANY



Connection: Ø 45/22 mm + Pin

For your Sewer Rehab Robots:

KA-TE FR150, PMO-Mini, Pipetronics FR/EF 150, ...

Connection: Ø 45/22 mm + Pin

KA-TE FR 150, PMO-Mini, Pipetronics FR/EF 150, ...

Milling tools suitable for **CONCRETE, VITRIFIED CLAY**



Diamond grooving milling tool

Field of application: Preparatory milling of cracks and joints

Ø mm	Pipe DN mm	Height mm	Segments	Code-Nr.
30	150	40	3	21 49 80 016
30	150	37	5	21 49 80 026



Diamond inflow pipe milling tool

Field of application: Preparatory milling of laterals,
Removal of intruding laterals and deposits

Ø mm	Pipe DN mm	Height mm	Segments	Code-Nr.
61	150	31	8	21 49 60 008
65	200	31	12	21 49 60 009



Diamond inflow pipe milling tool - with flushing holes -

Field of application: Preparatory milling of laterals,
Removal of intruding laterals and deposits

Ø mm	Pipe DN mm	Height mm	Segments	Code-Nr.
65	250	32	9 + 9 wedges	21 49 60 109



Diamond mushroom shaped milling tool - spring loaded -

Field of application: Removal of intruding laterals and deposits,
surface grinding and milling of offset socket transitions

Ø mm	Pipe DN mm	Height mm	Segments	Code-Nr.
80	150	42	12	21 49 70 087
80	200	42	12	21 49 70 088
80	250	42	12	21 49 70 004



Diamond mushroom shaped peripheral milling tool - spring loaded -

Field of application: Removal of intruding laterals and deposits,
surface grinding and milling of offset socket transitions

Ø mm	Pipe DN mm	Height mm	Segments	Code-Nr.
98	150	42	18	21 49 70 010
98	200	42	18	21 49 70 011
98	250	42	18	21 49 70 005

Milling tools suitable for **CIPP, PVC** and **ROOTS**



Diamond grooving milling tool - diamond tip + flushing holes -

Field of application: Opening of laterals and inlet lines

Ø mm	Height mm	Segments	Code-Nr.
28	45	asymmetrical	21 49 40 508

Kardiam-BLACK-POWERLINE® Not for steel-reinforced concrete!



Diamond cone milling tool - carbide tip + flushing holes -

Field of application: Opening of laterals and inlet lines

Ø mm	Height mm	Segments	Code-Nr.
45/15	40	10 + 1	21 49 40 184

Kardiam-BLACK-POWERLINE® Not for steel-reinforced concrete!



Diamond cone milling tool - asymmetrical segments, carbide tip + flushing holes -

Field of application: Opening of laterals and inlet lines

Ø mm	Height mm	Segments	Code-Nr.
45/15	40	asymmetrical + 1	21 49 40 239

Kardiam-BLACK-POWERLINE® Not for steel-reinforced concrete!



Diamond cylinder milling tool

Field of application: Opening of laterals and inlet lines

Ø mm	Height mm	Segments	Code-Nr.
45	30	16	21 49 40 024

Kardiam-BLACK-POWERLINE® Not for steel-reinforced concrete!

Milling tools suitable for **CIPP, PVC** and **ROOTS**



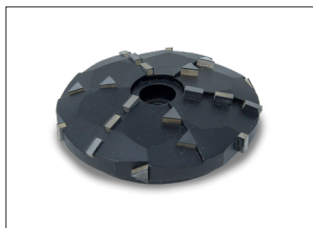
Diamond inflow pipe milling tool - with flutes + flushing holes -

Field of application: Opening of laterals and inlet lines

Removal of intruding laterals and deposits

Ø mm	Height mm	Segments	Code-Nr.
58	27	28	21 49 40 246

Kardiam-BLACK-POWERLINE® Not for steel-reinforced concrete!



Diamond mushroom shaped peripheral milling tool - spring loaded -

Field of application: Removal of intruding laterals and deposits,

surface grinding and milling of offset socket transitions

Ø mm	Pipe DN mm	Height mm	Segments	Code-Nr.
80	150 right cut	30	27	21 49 40 093
80	150 left cut	30	27	21 49 40 092
80	200 right cut	30	27	21 49 40 043
80	200 left cut	30	27	21 49 40 042
80	250 right cut	30	27	21 49 40 249
80	250 left cut	30	27	21 49 40 250

Kardiam-BLACK-POWERLINE® Not for steel-reinforced concrete!



Carbide cone milling tool

Field of application: Opening of laterals and inlet lines,, finishing

Ø mm	Height mm	Granulate	Code-Nr.
45/15	34	2,5/3 + 2 Carbide tips	21 45 00 035

ACCESSORIES



Extensions

Ø mm	Length mm	Code-Nr.
45	18	21 50 01 012
45	25	21 50 01 018
45	50	21 50 01 017



Best **TOOLS** for **CUTTERS**

We are happy to advise you! Just give us a call!
We have tools for all sewer rehabilitation robots!

+49 (0)7520-9515-0

Send us a fax!

+49 (0)7520-9515-29

or send us an e-mail:

info@kardiam.de



www.kardiam.de

KARDIAM Diamantwerkzeuge GmbH
Claude-Dornier-Straße 17
D-88239 Wangen
GERMANY

Phone: +49 (0)7520-9515-0
Fax: +49 (0)7520-9515-29
info@kardiam.de
www.kardiam.de