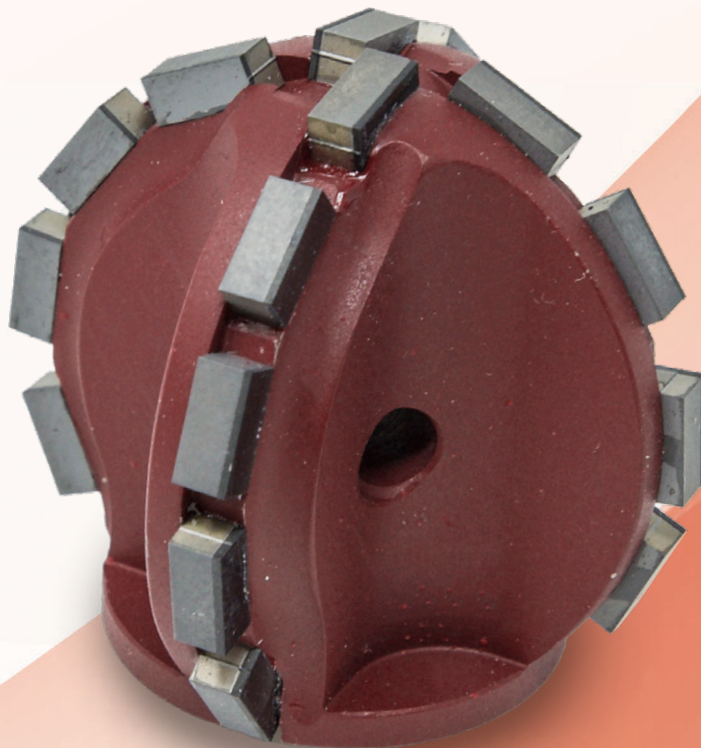


Best **TOOLS** for **CUTTERS**



■ MADE
■ IN
■ GERMANY



For your Sewer Rehab Robots:
IMS MICRO/DRIVE/MICRO S/MIDI 4 small motor/
DRIVEplus small motor

THREAD

IMS MICRO/DRIVE/MICRO S/MIDI 4 small motor/DRIVEplus small motor

Milling tools suitable for **CIPP, PVC** and **ROOTS**

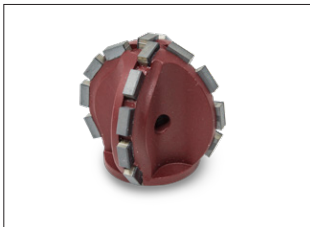


Diamond halfglobe milling tool

Field of application: Opening of laterals and inlet lines

Ø mm	Height mm	Segments	IMS-No.	Code-No.
40	29	12	015 01 126	21 49 40 174

Kardiam-BLACK-POWERLINE® Not for steel-reinforced concrete!



Diamond globe milling tool - transparent -

Field of application: Opening of laterals and inlet lines

Ø mm	Height mm	Segments	IMS-No.	Code-No.
42	40	18 - 4 wings	015 01 134	21 49 40 126

Kardiam-BLACK-POWERLINE® Not for steel-reinforced concrete!



Diamond globe milling tool - transparent -

Field of application: Opening of laterals and inlet lines

Ø mm	Height mm	Segments	IMS-No.	Code-No.
50	50	30 - 6 wings	015 01 613	21 49 40 228

* only for IMS DRIVE, DRIVEplus + MIDI 4

Kardiam-BLACK-POWERLINE® Not for steel-reinforced concrete!



Diamond globe milling tool - transparent -

Field of application: Opening of laterals and inlet lines

Ø mm	Height mm	Segments	IMS-No.	Code-No.
56*	43	22 - 4 wings	015 01 139	21 49 40 130

* only for IMS DRIVE, DRIVEplus + MIDI 4

Kardiam-BLACK-POWERLINE® Not for steel-reinforced concrete!



Diamond globe milling tool - transparent -

Field of application: Opening of laterals and inlet lines

Ø mm	Height mm	Segments	IMS-No.	Code-No.
56*	43	33 - 6 wings	015 01 142	21 49 40 131

* only for IMS DRIVE, DRIVEplus + MIDI 4

Kardiam-BLACK-POWERLINE® Not for steel-reinforced concrete!



Diamond globe milling tool - long shaft -

Field of application: Opening of laterals and inlet lines

Ø mm	Height mm	Segments	IMS-No.	Code-No.
30	50	14	015 01 162	21 49 40 147

Kardiam-BLACK-POWERLINE® Not for steel-reinforced concrete!



Diamond cone milling tool

Field of application: Opening of laterals and inlet lines

Ø mm	Height mm	Segments	IMS-No.	Code-No.
30/10	30	10	015 01 165	21 49 40 198

Kardiam-BLACK-POWERLINE® Not for steel-reinforced concrete!



Diamond double-cone milling tool- transparent -

Field of application: Opening of laterals and inlet lines

Ø mm	Height mm	Segments	IMS-No.	Code-No.
36	45	16 - 4 wings	015 01 614	21 49 40 229

Kardiam-BLACK-POWERLINE® Not for steel-reinforced concrete!



Diamond inflow pipe milling tool

Field of application: Opening of laterals and inlet lines

Ø mm	Height mm	Segments	IMS-No.	Code-No.
50	44	28	015 01 131	21 49 40 122

Kardiam-BLACK-POWERLINE® Not for steel-reinforced concrete!



Diamond milling crown

Field of application: Opening of laterals and inlet lines

Ø mm	Height mm	Segments	IMS-No.	Code-No.
40	29	15	015 01 169	21 49 40 213

Kardiam-BLACK-POWERLINE® Not for steel-reinforced concrete!



Carbide halfglobe milling tool

Field of application: Opening of laterals and inlet lines

Ø mm	Height mm	Granulate	IMS-No.	Code-No.
40	29	1,2 - 1,8	015 01 128	21 45 00 158



Carbide globe milling tool - transparent -

Field of application: Opening of laterals and inlet lines

Ø mm	Height mm	Granulate	IMS-No.	Code-No.
30*	30	2,5 - 3	015 01 600	21 45 00 183
34*	35	2,5 - 3	015 01 604	21 45 00 182
45	45	2,5 - 3	015 01 605	21 45 00 181

* only to open small inlets DN50/75 or with an extension

THREAD

IMS MICRO/DRIVE/MICRO S/MIDI 4 small motor/DRIVEplus small motor

Milling tools suitable for **CIPP, PVC** and **ROOTS**



Carbide globe milling tool - long shaft -

Field of application: Opening of laterals and inlet lines

Ø mm	Height mm	Granulate	IMS-No.	Code-No.
31	50	1,2 - 1,8	015 01 163	21 45 00 168



Carbide cone milling tool

Field of application: Opening of laterals and inlet lines

Ø mm	Height mm	Granulate	IMS-No.	Code-No.
23/7	35	1,2 - 1,8	015 01 150	21 45 00 165
23/7	40	1,2 - 1,8	015 01 148	21 45 00 164



Diamond halfglobe milling tool

Field of application: Preparatory milling of laterals, fine finishing of foil residuals (UV)liner

Ø mm	Height mm	Surface	IMS-No.	Code-No.
40	29	Dia-Gran.	015 01 129	21 49 70 046

Milling tools suitable for **CONCRETE, VITRIFIED CLAY** and **DEPOSITS**



Diamond halfglobe milling tool

Field of application: Preparatory milling of laterals, Removal of intruding laterals and deposits

Ø mm	Height mm	Segments	IMS-No.	Code-No.
40	29	9	015 01 127	21 49 70 090



Diamond globe milling tool - transparent -

Field of application: Preparatory milling of laterals, Removal of intruding laterals and deposits

Ø mm	Height mm	Segments	IMS-No.	Code-No.
38	38	13 - 6 wings	015 01 601	21 49 70 203
45	45	13 - 6 wings	015 01 607	21 49 70 204
50*	44	19 - 6 wings	015 01 602	21 49 70 202

* only for IMS DRIVEplus + MIDI 4



Diamond inflow pipe milling tool

Field of application: Preparatory milling of laterals, Removal of intruding laterals and deposits

Ø mm	Height mm	Segments	IMS-No.	Code-No.
40	43	12	015 01 144	21 49 70 097

ACCESSORIES



Diamond cutting disc + Connection for IMS MICRO/...

Ø mm	Height mm	Borehole / Connection	IMS-No.	Code-No.
50	2	6	015 01 167	21 28 27 112
28	32	IMS MICRO	015 01 166	21 50 00 074



Extensions

Ø mm	Height mm	Thread	IMS-No.	Code-No.
20	28	IMS MICRO	015 01 133	21 50 01 038



Corundum grindstone + Connection for IMS MICRO/...

Field of application: Grinding of metal and cast iron pipes, removal of intruding obstacles

Ø mm	Height mm	Borehole / Connection	IMS-No.	Code-No.
40	30	12	015 01 160	21 50 00 113
28	34	IMS MICRO	015 01 161	21 50 00 068



Cup Brushes + Connection for IMS MICRO/...

Field of application: Post-processing of inliner openings, removal of residual film, Cleaning, roughening work, ...

Ø mm	Height mm	Borehole / Connection	IMS-No.	Code-No.
40	29	8	015 01 062	21 50 00 224
28	40	IMS MICRO	015 01 070	21 50 00 066



Disk Brushes + Connection for IMS MICRO/...

Field of application: Post-processing of inliner openings, removal of residual film, Cleaning, roughening work, ...

Ø mm	Height mm	Borehole / Connection	IMS-No.	Code-No.
50	8	12	015 01 058	21 50 00 172
63	8	12	015 01 059	21 50 00 173
28	28	IMS MICRO (1 Brush)	015 01 067	21 50 00 170
28	33	IMS MICRO (2 Brushes)	015 01 068	21 50 00 171



Cylinder Brushes + Connection for IMS MICRO/...

Field of application: Post-processing of inliner openings, removal of residual film, Cleaning, roughening work, ...

Ø mm	Height mm	Borehole / Connection	IMS-No.	Code-No.
40	25	10	015 01 060	21 50 00 230
28	53	IMS MICRO	015 01 069	21 50 00 169



Best **TOOLS** for **CUTTERS**

We are happy to advise you! Just give us a call!
We have tools for all sewer rehabilitation robots!

+49 (0)7520-9515-0

Send us a fax!

+49 (0)7520-9515-29

or send us an e-mail:

info@kardiam.de



www.kardiam.de

KARDIAM Diamantwerkzeuge GmbH
Claude-Dornier-Straße 17
D-88239 Wangen
GERMANY

Phone: +49 (0)7520-9515-0
Fax: +49 (0)7520-9515-29
info@kardiam.de
www.kardiam.de