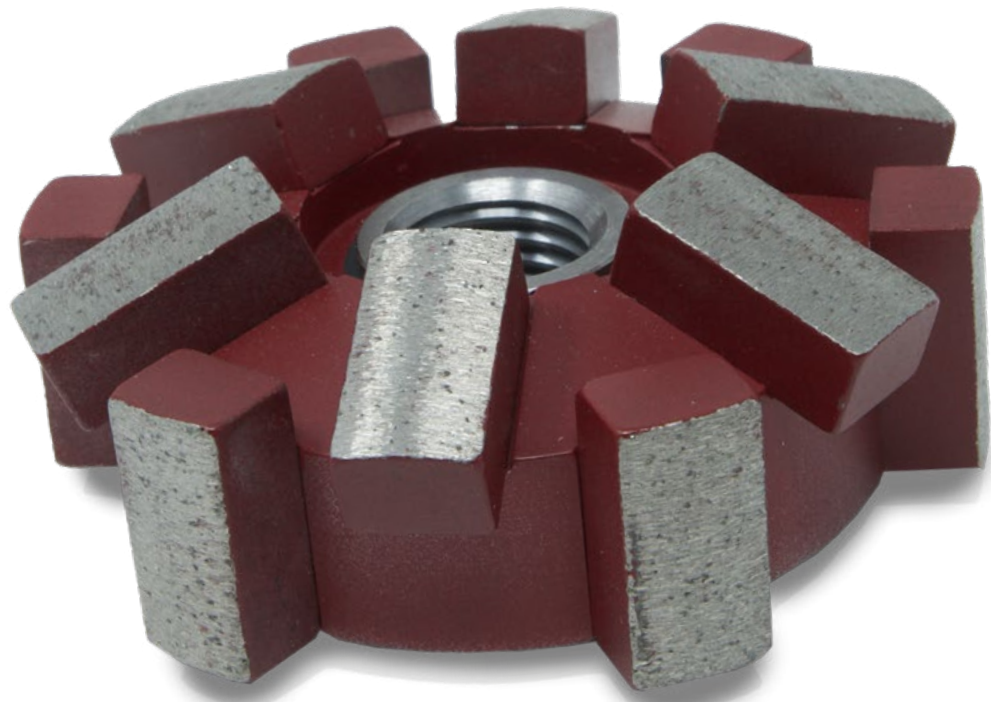


Kardiam[®]

Diamantwerkzeuge

Best TOOLS for CUTTERS



For your Sewer Rehab Robots:
IMS-MIDI 4 large motor &
DRIVEplus
large motor

EN



Milling tools suitable for **CIPP, PVC** and **ROOTS**



Diamond cone milling tool

Field of application: Opening of laterals and inlet lines

ømm	Height mm	Segments	IMS-No.	Code-No.
40/20	47	16	015 01 241	21 49 40 160



BLACK POWERLINE®

Not for steel-reinforced concrete!



Diamond globe milling tool

Field of application: Opening of laterals and inlet lines

ømm	Height mm	Segments	IMS-No.	Code-No.
42	45	28 double	015 01 243	21 49 40 162



BLACK POWERLINE®

Not for steel-reinforced concrete!



Diamond globe milling tool - transparent - with crossholes

Field of application: Opening of laterals and inlet lines

ømm	Height mm	Segments	IMS-No.	Code-No.
42	45	14 - 4 wings	015 01 203	21 49 40 345



BLACK POWERLINE®

Not for steel-reinforced concrete!



Diamond globe milling tool -transparent- with crossholes

Field of application: Opening of laterals and inlet lines

ømm	Height mm	Segments	IMS-No.	Code-No.
50	57	30 - 6 wings	015 01 213	21 49 40 351



BLACK POWERLINE®

Not for steel-reinforced concrete!



Diamond globe milling tool -transparent-

Field of application: Opening of laterals and inlet lines



ømm	Height mm	Segments	IMS-No.	Code-No.
56	40	33 - 6 wings	015 01 242	21 49 40 161



BLACK POWERLINE®

Not for steel-reinforced concrete!

Diamond plate milling tool

Field of application: Opening of laterals and inlet lines, removes deposits



ømm	Height mm	Segments	IMS-No.	Code-No.
63	27	24	015 01 215	21 49 40 165



BLACK POWERLINE®

Not for steel-reinforced concrete!

Carbide granulate globe milling tool

Field of application: Opening of laterals and inlet lines, removes deposits



ømm	Height mm	Grain size	IMS-No.	Code-No.
55	50	2,5/3,0	015 01 212	21 45 00 185

Milling tools suitable for CONCRETE, VITRIFIED CLAY and DEPOSITS

Diamond globe milling tool

Field of application: : Preparatory milling of laterals, Removal of intruding laterals and deposits



ømm	Height mm	Segments	IMS-No.	Code-No.
48	47	21	015 01 202	21 49 70 109

Diamond globe milling tool

Field of application: : Preparatory milling of laterals, Removal of intruding laterals and deposits



ømm	Height mm	Segments	IMS-No.	Code-No.
60	64	16	015 01 201	21 49 70 079



Diamond halfglobe milling tool

Field of application: Preparatory milling of laterals, Removal of intruding laterals and deposits

ømm	Height mm	Segments	IMS-No.	Code-No.
65	30	10	015 01 244	21 49 60 095



Diamond cone milling tool

Field of application: Preparatory milling of laterals, Removal of intruding laterals and deposits

ømm	Height mm	Segments	IMS-No.	Code-No.
38/28	52	6	015 01 210	21 49 60 079



Diamond inflow pipe milling tool

Field of application: Preparatory milling of laterals, removal of intruding laterals and deposits

ømm	Height mm	Segments	IMS-No.	Code-No.
53	30	8 DN100	015 01 211	21 49 60 082
85	33	12 DN250	015 01 200	21 49 60 080



Diamond inflow pipe milling tool -elastic/spring loaded-

Field of application: Preparatory milling of laterals, Removal of intruding laterals and deposits

ømm	Height mm	Segments	IMS-No.	Code-No.
85	35	12 DN250	015 01 214	21 49 60 092





Diamond mushroom shaped milling tool -elastic/spring loaded-
Field of application: Preparatory milling of laterals, removal of intruding laterals and deposits

ømm	Height mm	Segments	IMS-No.	Code-No.
80	38	12 DN200	015 01 216	21 49 70 178



Diamond mushroom shaped milling tool -elastic/spring loaded-
Field of application: Preparatory milling of laterals, removal of intruding laterals and deposits

ømm	Height mm	Segments	IMS-No.	Code-No.
98	38	18 DN200	015 01 233	21 49 70 127

Milling tools suitable for METAL and CAST IRON PIPES



Carbide globe milling tool

Field of application: Grinding of metal and cast iron pipes, removal of intruding obstacles

ømm	Height mm	Toothing	IMS-No.	Code-No.
25	51	universal	015 01 260	21 45 01 141



Carbide drop milling tool

Field of application: Grinding of metal and cast iron pipes, removal of intruding obstacles

ømm	Height mm	Toothing	IMS-No.	Code-No.
16	53	universal	015 01 261	21 45 01 142



Corundum grindstone

Field of application: Grinding of metal and cast iron pipes, removal of intruding obstacles

ømm	Borehole / Thread	Height mm	IMS-No.	Code-No.
80	ISS-IMS	30	015 01 207	21 50 00 133
80	22,2	27	015 01 154	21 50 00 102

ACCESSORIES



Multifunctional key for changing the screw connection

(Corundum grindstone ø80 + ø90/110):

Total length mm	SW	Pins	IMS-No.	Code-No.
160	24	2	015 01 158	21 50 00 111



Extensions IMS-ISS-Special thread

ømm	Useful length mm	IMS-No.	Code-No.
24	30	015 01 209	21 50 00 132



Adapter: IMS-ISS-Special thread to 5/8"UNC

ømm	Useful length mm	IMS-No.	Code-No.
25	30	015 01 206	21 50 00 131



Adapter: IMS-ISS-Special thread to IMS-Micro/...



ømm	Useful length mm	IMS-No.	Code-No.
24	39	015 01 240	21 50 00 246

Brushes

Field of application: Post-processing of inliner openings, removal of residual film, Cleaning, roughening work, ...



Brushes	ømm	Height mm	IMS-No.	Code-No.
Cup brushes	65	50	015 01 234	21 50 00 213
Cup brushes	80	70	015 01 204	21 50 00 214
Cup brushes	100	65	015 01 235	21 50 00 215

Round brush + Mounting

Field of application: Post-processing of inliner openings, removal of residual film, Cleaning, roughening work, ...



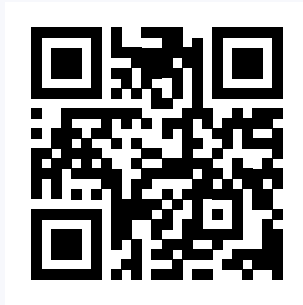
Brushes	ømm	Height mm	IMS-No.	Code-No.
Round brush	80	18	015 01 227	21 50 00 238
Mounting for round brush Ø80mm H18	30	42	015 01 220	21 50 00 242
Cup brushes	80	25	015 01 228	21 50 00 239
Mounting for round brush Ø80mm H25	30	49	015 01 221	21 50 00 243



Grinding wheel mounting IMS-ISS-Special thread to ø22,2



ømm	Useful length mm	IMS-No.	Code-No.
45	34	015 01 239	21 50 00 247



KARDIAM Diamantwerkzeuge GmbH
Claude-Dornier Straße 17, D-88239 Wangen, GERMANY

We are happy to advise you! Just give us a call!
We have tools for all sewer rehabilitation robots!

+49 (0)7520-9515-0

Send us a message on whats up 

+49 (0) 170-9323152

Send us a fax!

+49 (0)7520-9515-29

or send us and e-mail:

info@kardiam.de



www.kardiam.de