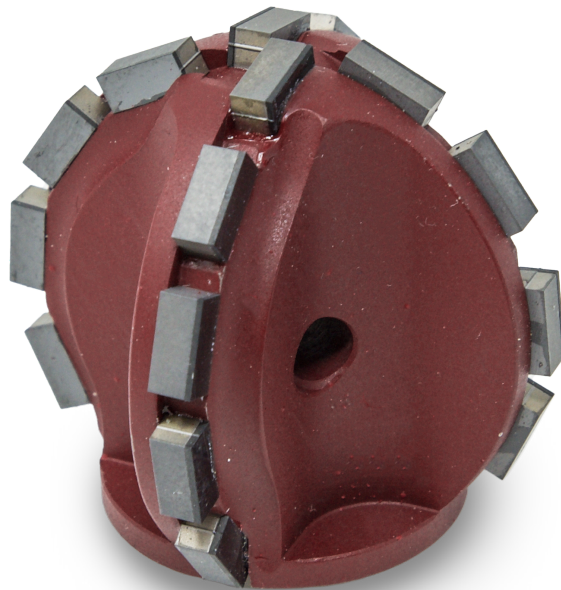


Kardiam[®]

Diamantwerkzeuge

Best TOOLS for CUTTERS



For your Sewer Rehab Robots:

IMS MICRO/MIDI 4 small motor/DRIVE /DRIVE **E**

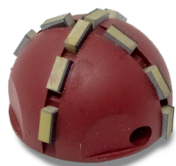
DRIVEplus small motor

MICRO S /

MICRO **E**

EN

Milling tools suitable for CIPP, PVC and ROOTS



Diamond halfglobe milling tool

Field of application: Opening of laterals and inlet lines

ømm	Height mm	Segments	IMS-No.	Code-No.
40	29	12	015 01 126	21 49 40 174



BLACK POWERLINE®

Not for steel-reinforced concrete!



Diamond halfglobe milling tool - transparent - with crossholes

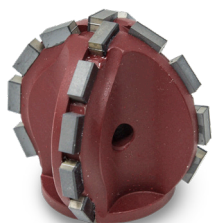
Field of application: Opening of laterals and inlet lines

ømm	Height mm	Segments	IMS-No.	Code-No.
42	30	12 - 4 wings	015 01 250	21 49 40 279



BLACK POWERLINE®

Not for steel-reinforced concrete!



Diamond globe milling tool - transparent -

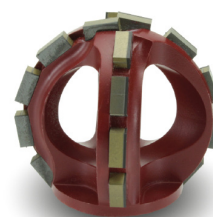
Field of application: Opening of laterals and inlet lines

ømm	Height mm	Segments	IMS-No.	Code-No.
42	40	18 - 4 wings	015 01 134	21 49 40 126



BLACK POWERLINE®

Not for steel-reinforced concrete!



Diamond globe milling tool - transparent - with crossholes

Field of application: Opening of laterals and inlet lines

ømm	Height mm	Segments	IMS-No.	Code-No.
42	40	18 - 4 wings	015 01 246	21 49 40 326



BLACK POWERLINE®

Not for steel-reinforced concrete!



Diamond globe milling tool - transparent - with crossholes

Field of application: Opening of laterals and inlet lines

ømm	Height mm	Segments	IMS-No.	Code-No.
50	50	30 - 6 wings	015 01 613	21 49 40 228



BLACK POWERLINE®

Not for steel-reinforced concrete!

** only for IMS DRIVE, DRIVEplus + MIDI 4*



Diamond globe milling tool - transparent -

Field of application: Opening of laterals and inlet lines

ømm	Height mm	Segments	IMS-No.	Code-No.
56*	43	22 - 4 wings	015 01 139	21 49 40 130



BLACK POWERLINE®

Not for steel-reinforced concrete!

** only for IMS DRIVE, DRIVEplus + MIDI 4*



Diamond globe milling tool - transparent -

Field of application: Opening of laterals and inlet lines

ømm	Height mm	Segments	IMS-No.	Code-No.
56*	43	33 - 6 wings	015 01 142	21 49 40 131



BLACK POWERLINE®

Not for steel-reinforced concrete!

** only for IMS DRIVE, DRIVEplus + MIDI 4*



Diamond globe milling tool - long shaft -

Field of application: Opening of laterals and inlet lines

ømm	Height mm	Segments	IMS-No.	Code-No.
30	52	asymmetrical	015 01 253	21 49 40 280



BLACK POWERLINE®

Not for steel-reinforced concrete!



Diamond globe milling tool - long shaft -

Field of application: Opening of laterals and inlet lines

ømm	Height mm	Segments	IMS-No.	Code-No.
30	50	14	015 01 162	21 49 40 147



BLACK POWERLINE®

Not for steel-reinforced concrete!



Diamond cone milling tool

Field of application: Opening of laterals and inlet lines

ømm	Height mm	Segments	IMS-No.	Code-No.
30/10	30	10	015 01 165	21 49 40 198



BLACK POWERLINE®

Not for steel-reinforced concrete!



Diamond cone milling tool - long shaft -

Field of application: Opening of laterals and inlet lines

ømm	Height mm	Segments	IMS-No.	Code-No.
30/10	52	10	015 01 258	21 49 40 252



BLACK POWERLINE®

Not for steel-reinforced concrete!



Diamond double cone milling tool - transparent -

Field of application: Opening of laterals and inlet lines

ømm	Height mm	Segments	IMS-No.	Code-No.
36	45	16 - 4 wings	015 01 614	21 49 40 229



BLACK POWERLINE®

Not for steel-reinforced concrete!



Diamond inflow pipe milling tool

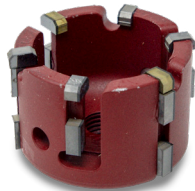
Field of application: Opening of laterals and inlet lines

ømm	Height mm	Segments	IMS-No.	Code-No.
50	44	28	015 01 131	21 49 40 122



BLACK POWERLINE®

Not for steel-reinforced concrete!



Diamond milling crown

Field of application: Opening of laterals and inlet lines

ømm	Height mm	Segments	IMS-No.	Code-No.
40	29	15	015 01 169	21 49 40 213



BLACK POWERLINE®

Not for steel-reinforced concrete!



Carbide halfglobe milling tool

Field of application: Opening of laterals and inlet lines

ømm	Height mm	Granulate	IMS-No.	Code-No.
40	29	1,2 - 1,8	015 01 128	21 45 00 158



Carbide halfglobe milling tool

Field of application: Opening of laterals and inlet lines

ømm	Height mm	Granulate	IMS-No.	Code-No.
30	15	1,2 - 1,8	015 01 247	21 45 00 155



Carbide halfglobe milling tool

Field of application: Opening of laterals and inlet lines

ømm	Height mm	Granulate	IMS-No.	Code-No.
37	13	1,2 - 1,8	015 01 248	21 45 00 156



Carbide globe milling tool - transparent - 6 wings

Field of application: Opening of laterals and inlet lines

ømm	Height mm	Granulate	IMS-No.	Code-No.
30*	30	2,5 - 3	015 01 600	21 45 00 183
34*	35	2,5 - 3	015 01 604	21 45 00 182
45	45	2,5 - 3	015 01 605	21 45 00 181

** only to open small inlets DN50/75 or with an extension*



Carbide inflow pipe milling tool

Field of application: Opening of laterals and inlet lines

ømm	Height mm	Granulate	IMS-No.	Code-No.
50	44	2,5 - 3	015 01 249	21 45 00 190



Carbide globe milling tool - long shaft -

Field of application: Opening of laterals and inlet lines

ømm	Height mm	Granulate	IMS-No.	Code-No.
31	50	1,2 - 1,8	015 01 163	21 45 00 168



Carbide cone milling tool

Field of application: Opening of laterals and inlet lines

ømm	Height mm	Granulate	IMS-No.	Code-No.
27/7	35	1,2 - 1,8	015 01 150	21 45 00 165
27/7	40	1,2 - 1,8	015 01 148	21 45 00 164



Diamond halfglobe milling tool

Field of application: Preparatory milling of laterals, fine finishing of foil residuals (UV) liner

ømm	Height mm	Surface	IMS-No.	Code-No.
40	29	Dia - Gran.	015 01 129	21 49 70 046



Diamond halfglobe milling tool - vacuum braze -

Field of application: Preparatory milling of laterals, grinding of hard (UV) liners

ømm	Height mm	Surface	IMS-No.	Code-No.
40	28	Dia - Gran.	015 01 259	21 49 70 100

Milling tools suitable for **CONCRETE, VITRIFIED CLAY** and **DEPOSITS**



Diamond halfglobe milling tool

Field of application: Preparatory milling of laterals, Removal of intruding laterals and deposits

ømm	Height mm	Segments	IMS-No.	Code-No.
40	29	9	015 01 127	21 49 70 090



Diamond globe milling tool - transparent -

Field of application: Preparatory milling of laterals, Removal of intruding laterals and deposits

ømm	Height mm	Segments	IMS-No.	Code-No.
38	38	13 - 6 wings	015 01 601	21 49 70 203
45	45	13 - 6 wings	015 01 607	21 49 70 204
50*	44	19 - 6 wings	015 01 602	21 49 70 202

* only for IMS DRIVEplus + MIDI 4



Diamond inflow pipe milling tool

Field of application: Preparatory milling of laterals, Removal of intruding laterals and deposits

ømm	Height mm	Segments	IMS-No.	Code-No.
40	43	12	015 01 144	21 49 70 097

Milling tools suitable for **METAL**



Corundum grindstone + tool holder for IMS MICRO/...

Field of application: Grinding of metal and cast iron pipes, removal of intruding obstacles

ømm	Height mm	Borehole/Thread	IMS-No.	Code-No.
40	30	12	015 01 160	21 50 00 113
28	34	IMS MICRO	015 01 161	21 50 00 068



Carbide globe

Field of application: Grinding of metal and cast iron pipes, removal of intruding obstacles

ømm	Height mm	Toothing	IMS-No.	Code-No.
25	41	universal	015 01 256	21 45 01 145



Carbide drop

Field of application: Grinding of metal and cast iron pipes, removal of intruding obstacles

ømm	Height mm	Toothing	IMS-No.	Code-No.
16	43	universal	015 01 257	21 45 01 143

ACCESSORIES



Diamond cutting disc + tool holder for IMS MICRO/...

ømm	Height mm	Borehole/Thread	IMS-No.	Code-No.
50	2	6	015 01 167	21 28 27 112
28	32	IMS MICRO	015 01 166	21 50 00 074



Extensions

ømm	Height mm	Thread	IMS-No.	Code-No.
20	28	IMS MICRO	015 01 133	21 50 01 038



Cup Brushes + tool holder for IMS MICRO/...

Field of application: Post-processing of inliner openings, removal of residual film, cleaning, roughening work, ...

ømm	Height mm	Borehole/Thread	IMS-No.	Code-No.
40	29	8	015 01 062	21 50 00 224
28	40	IMS MICRO	015 01 070	21 50 00 066



Disk Brushes + tool holder for IMS MICRO/...

Field of application: Post-processing of inliner openings, removal of residual film, cleaning, roughening work, ...

ømm	Height mm	Borehole/Thread	IMS-No.	Code-No.
50	8	12	015 01 058	21 50 00 172
63	8	12	015 01 059	21 50 00 173
28	28	IMS MICRO (1 Brush)	015 01 067	21 50 00 170
28	33	IMS MICRO (2 Brushes)	015 01 068	21 50 00 171



Cylinder Brushes + tool holder for IMS MICRO/...

Field of application: Post-processing of inliner openings, removal of residual film, cleaning, roughening work, ...

ømm	Height mm	Borehole/Thread	IMS-No.	Code-No.
40	25	10	015 01 060	21 50 00 230
28	53	IMS MICRO	015 01 069	21 50 00 169



KARDIAM Diamantwerkzeuge GmbH

Claude-Dornier Straße 17, D-88239 Wangen, GERMANY

We are happy to advise you! Just give us a call!
We have tools for all sewer rehabilitation robots!

+49 (0)7520-9515-0

Send us a message on whats up 

+49 (0) 170-9323152

Send us a fax!

+49 (0)7520-9515-29

or send us and e-mail:

info@kardiam.de



www.kardiam.de